

Kachina Mountain Lodge

KML

Cabin Sites For Sale



Project Overview

Evolving out of the timeless euro-alpine "Alm" traditions first introduced to Kachina Village by the owners of the Bavarian Lodge & Restaurant, the Kachina Mountain Lodge (KML) project will add another key mixed-use component of Kachina's unique pedestrian oriented euro-alpine wilderness village experience located at the top of Taos Ski Valley high up in the mountains above historic Taos in northern New Mexico.

Master planned as a 3-phase project, the Kachina Mountain Lodge project includes a Wilderness Cabin Phase, a Carriage House Phase and a Main Lodge Phase. Owners of this project anticipate that the Main Lodge Phase will likely be built in the future when Kachina Village has enough housing units and/or hospitality suites needed to support anticipated KML commercial uses. Given Kachina Mountain Lodge's unique location along the pedestrian (hiker trail) corridor between the existing lift four and block 3 commercial core areas, the anticipated commercial build out of Kachina Village should easily support the Kachina Mountain Lodge and Cabins project, including an intimate KML restaurant with wilderness views of 7 peaks. Presently, the owners of the Kachina Mountain Lodge property are moving forward with the development and construction of the Wilderness Cabin phase. Prior to construction of the third Main Lodge Phase, KML residence owners will have access to comprehensive interim hospitality services provided by neighboring Bavarian Lodge & Restaurant.

Wilderness Cabin Phase

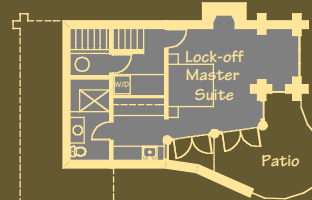
The Wilderness Cabin Phase of the Kachina Mountain Lodge project includes only five luxury rustic mountain cabins overlooking Kachina's community wetland park and majestic mountain peaks.

Only three cabin sites (C-3, C-4 & C-5) are still available for sale! Offering includes rustic luxury mountain cabin designs by Comet Studios!

Wilderness Cabins C-3 & C-4

- 2 Bedrooms / 2.5 Baths with 1637 sq. ft. of heated space

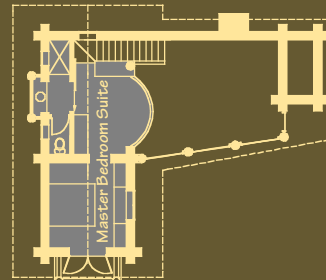
- First Floor Plan (480sf lock-off suite)



- Second Floor Plan (752sf living area)



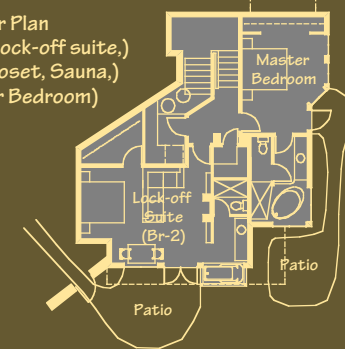
- Third Floor Plan (405sf master suite)



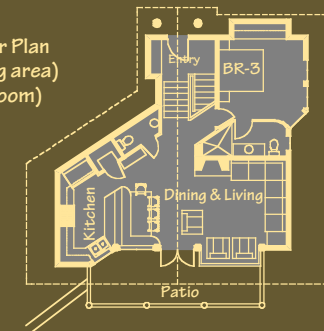
Wilderness Cabin C-5

- 3 Bedrooms / 3.5 Baths with 2,000 sq. ft. of heated space

- First Floor Plan (1,050sf lock-off suite, Utility Closet, Sauna, & Master Bedroom)



- Second Floor Plan (950sf living area) (& 3rd Bedroom)



All rights reserved. Copyright © Comet Studios 2010

Cabin Design Details

- General Features - Gracefully terraced into the site, each 3-story Wilderness Cabin has been carefully designed to fully embrace our site's abundant sunny exposure with a unique passive /active solar design that incorporates environmentally conscious building technology & anticipated construction appropriate for their unique wilderness location. Expansive glass for passive solar gain will also provide breathtaking expansive wilderness mountain views.
- Ground level 2nd floor Vestibule Entrance includes ski storage and a place to take off gear.
- Luxury Master Baths will include features like large vanities, separate shower, tub and steam saunas.
- Open Living & Dining Area offers unique cabin style built-ins, double bed size window seat with comfortable pillows, guest bath, private patio area and optional native rock fireplace.
- County style Gourmet Kitchen offers rustic hand made cabinets, stone countertops state of the art energy efficient appliances and green house nook for breakfast table or indoor herb garden.
- Utility Area includes efficient hydronic space and water heating equipment, stack washer dryer, lockable owner storage and wilderness cabin emergency/maintenance kit.

For more information call 505.231.1454

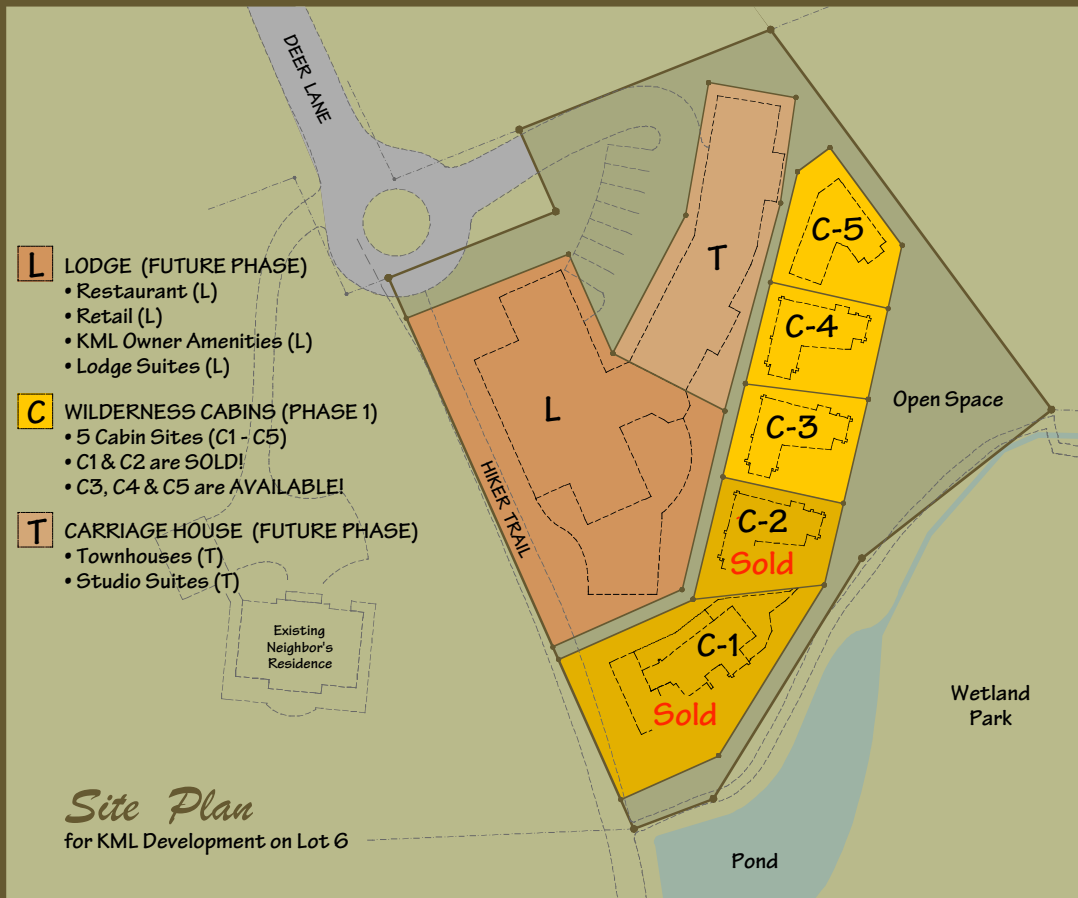
For a tour of available sites, call 505.231.1454

or Visit www.KachinaMountainLodge.com

KML

Cabin Sites For Sale

Limited Offering for Ownership in the Luxury Wilderness Cabin Phase of Kachina Mountain Lodge



Cabin Sites Feature:

- Unique Alpine Wilderness Location
- Warm Sunny Exposure
- Peaceful Park Side Ambiance
- Majestic Mountain Views
- Easy Ski-in | Ski-out Access
- Custom Wilderness Cabin Design

Wilderness Cabins Feature:

- High Performance Passive Solar Design
- 1st Floor Lock-off Suite with Luxury Bath & Private Outdoor Patio
- 2nd Floor Open Living Area with Window Seat, Expansive View Windows, Entry Vestibule, Gourmet Kitchen with Inglenook, Powder Bath, Private Patio Deck, Custom Built-ins & optional Native Rock Fireplace
- 3rd Floor Master Suite with Loft Sitting Area, Luxury Bath, & View Deck

Only 3 sites are available for this rare opportunity!

Visit www.KachinaMountainLodge.com or Call 505.231.1454